

TECHNICAL SPECIFICATION

LED Cabinet Light CAB-18



Technical data

- Power: 1W
- Color temperature: white / warm white
- Rated voltage: 230VAC
- Power Supply: control gear – driver for 12VDC (not included in the set)
- Type of LED: High power
- Light source: Epistar Taiwan
- Luminous flux: 100lm
- Protection against dust and moisture: IP20
- Housing: ABS ϕ 30x14mm
- Colour of the housing: silver
- Diffuser: ABS
- Long life : 30000h
- Beam angle: 120°
- Colour rendering index: Ra \geq 80

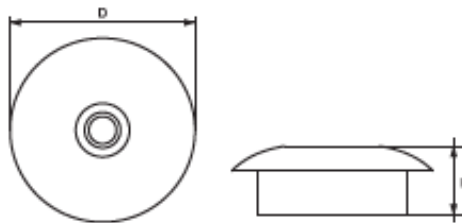
Areas of application

- Kitchen facilities
- Service areas
- Residential buildings
- Retail Showcases and counters

Product benefits

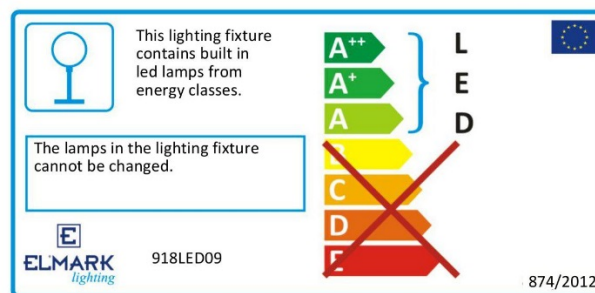
- Safety, low voltage operation
- Uniform and gentle illumination
- Low power consumption
- Repeated switch on/off does not affect life span
- Instant light with maximum luminous flux
- Environmentally friendly - no mercury and lead
- No ultraviolet and infrared rays

Variants and dimensions



Watt	Lumen (lm)	Colour temp.	Colour body	Size		Catalogue number	Packing (pcs)
				Diameter	Height		
1W	100	white	silver	30	14	918LED09	200
1W	100	warm white	silver	30	14	918LED19	200

Energy efficiency



Barcodes

Barcode	Catalogue number
3800131185723	918LED09
3800131185730	918LED19

Standards

EN 60598-1

EN 60598-2-1

EN 55015

EN 61547

EN 61000-3-2

